

## Fast Switching Diode

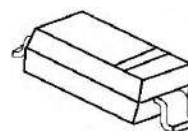
### Features

- Fast Switching Device (TRR <4.0 nS)
- Power Dissipation of 200mW
- High Stability and High Reliability
- Low reverse leakage
- AEC-Q101 qualified

### Mechanical Data

- SOD-323 Small Outline Plastic Package
- Polarity: Color band denotes cathode end
- Mounting Position: Any

**SOD-323**



MARKING: T4

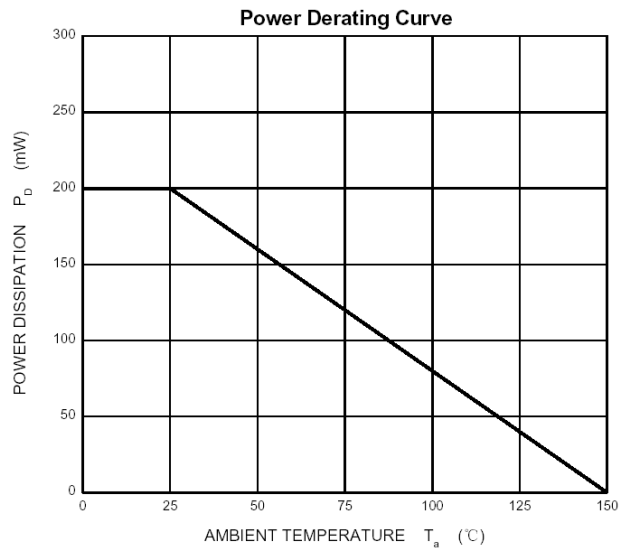
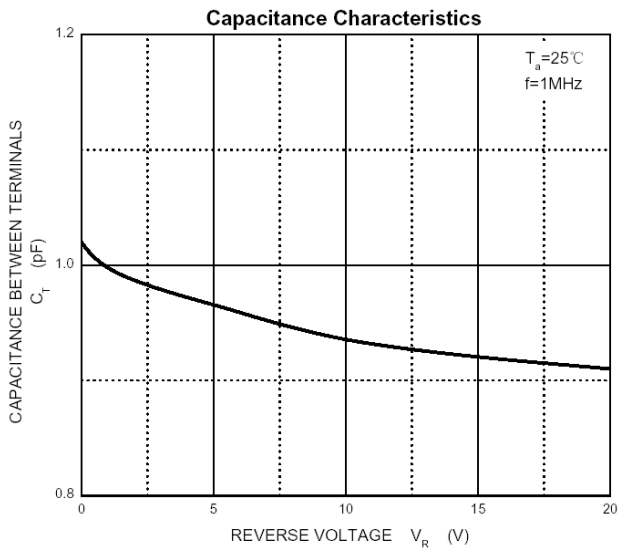
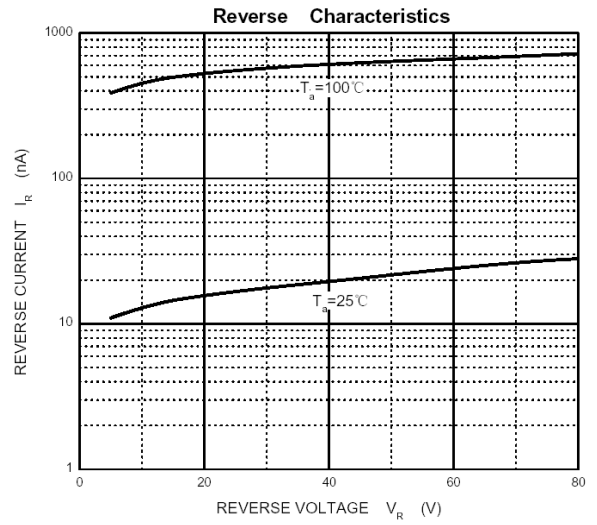
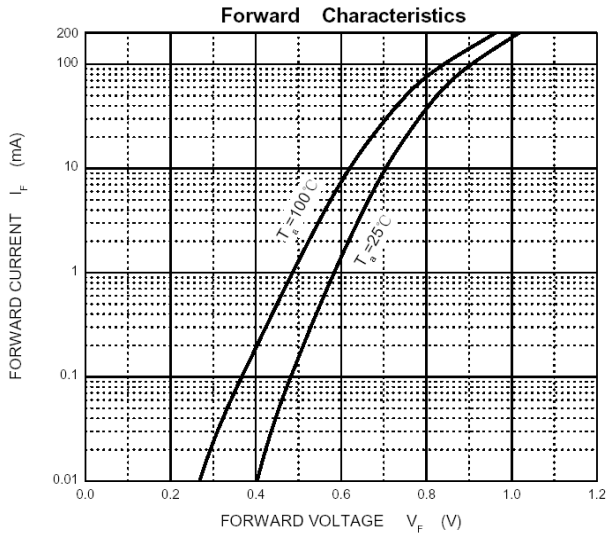
### Maximum Ratings & Thermal Characteristics (Ratings at 25°C ambient temperature unless otherwise specified.)

Parameters	Symbol	Value	Unit
Reverse Voltage	V <sub>R</sub>	75	V
Peak Reverse Voltage	V <sub>RM</sub>	100	V
Power Dissipation	P <sub>d</sub>	200	mW
Operating junction temperature	T <sub>j</sub>	150	°C
Storage temperature range	T <sub>s</sub>	-55-+150	°C
Thermal Resistance from Junction to Ambient	R <sub>θJA</sub>	625	°C/W
Working Inverse Voltage	W <sub>IV</sub>	75	V
Average Rectified Current	I <sub>o</sub>	150	mA
Non-repetitive Peak Forward Current	I <sub>FM</sub>	300	mA
Peak Forward Surge Current @tp=1us; TA=25°C	I <sub>FSM</sub>	2.0	A

Valid provided that electrodes are kept at ambient temperature.

### 电特性 Electrical Characteristics (Ratings at 25°C ambient temperature unless otherwise specified).

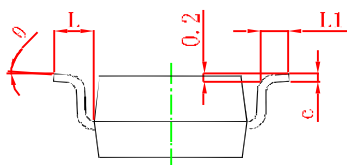
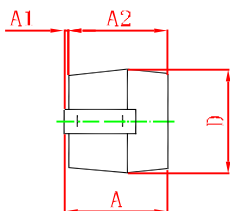
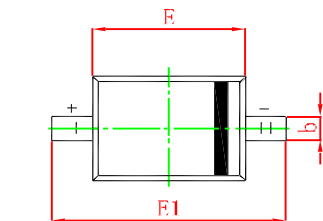
Symbols	Parameter	Test Condition	Limits		Unit
			Min	Max	
BV	Breakdown Voltage	IR=100uA	100		V
		IR=5uA	75		
IR	Reverse Leakage Current	VR=20V	---	25	nA
		VR=75	---	1	uA
VF	Forward Voltage	IF=1.0mA	---	0.715	V
		IF=10mA	---	0.855	
		IF=50mA	---	1.00	
		IF=150mA	---	1.25	
TRR	Reverse Recovery Time	IF= IR=10mA RL=100Ω IRR=0.1 X IR	---	4	nS
CT	Capacitance	VR=0V, f=1MHZ	---	2	pF



**SOD-323 PACKAGE OUTLINE**

Plastic surface mounted package

**SOD-323**



Symbol	Min.(mm)	Max.(mm)
<b>A</b>		1.000
<b>A1</b>	0.000	0.100
<b>A2</b>	0.800	0.900
<b>b</b>	0.250	0.350
<b>c</b>	0.080	0.150
<b>D</b>	1.200	1.400
<b>E</b>	1.600	1.800
<b>E1</b>	2.500	2.700
<b>L</b>	0.475REF	
<b>L1</b>	0.250	0.400
<b>θ</b>	<b>0°</b>	<b>8°</b>